

DIE Hole Machining

Advanced Die Hole Machining System

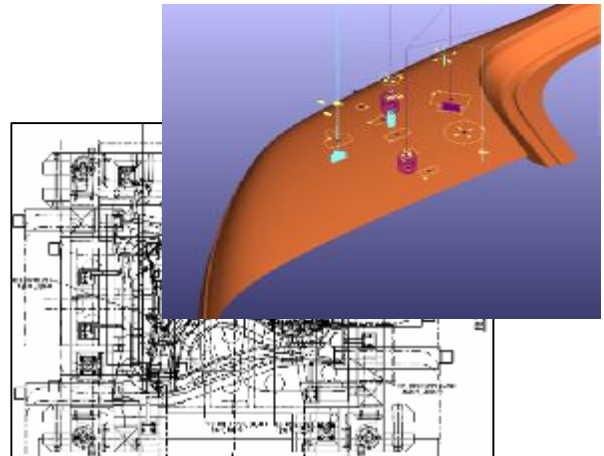


OVERVIEW

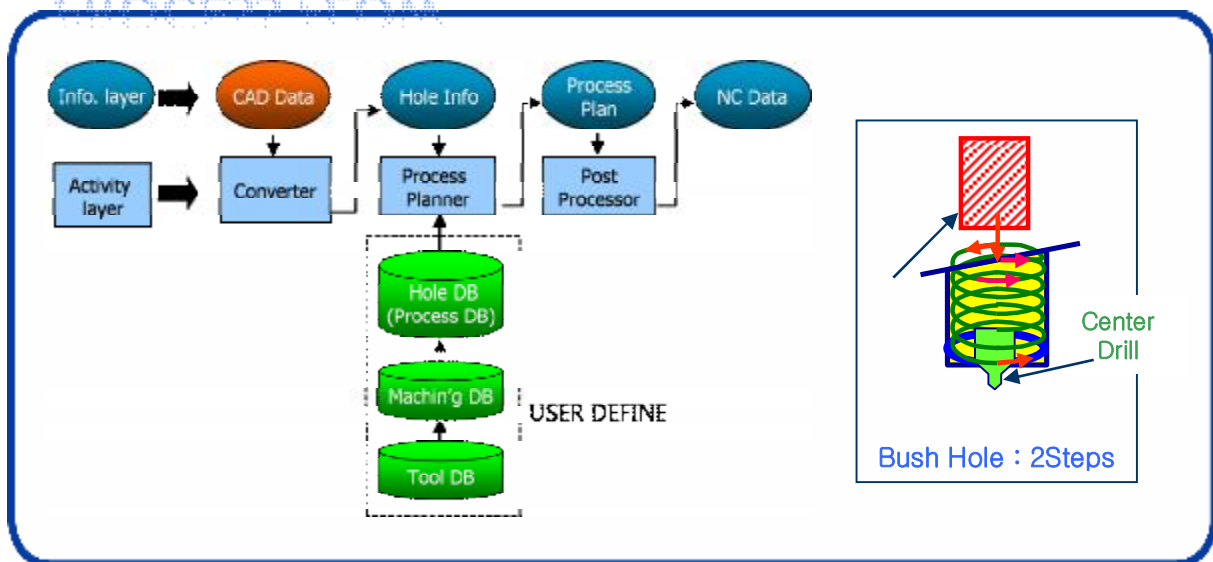
- ◆ Die-Bush Hole Machining CAM Solution
- ◆ Overcome Manual machining
- ◆ Realization un-manned Machining by ATC machining
- ◆ Simultaneous NC-Generation Bush-hole, Pin-hole, arbitrary shape-hole, scrap-hole, etc.
- ◆ One-Shot NC-Generation

SPECIALTY

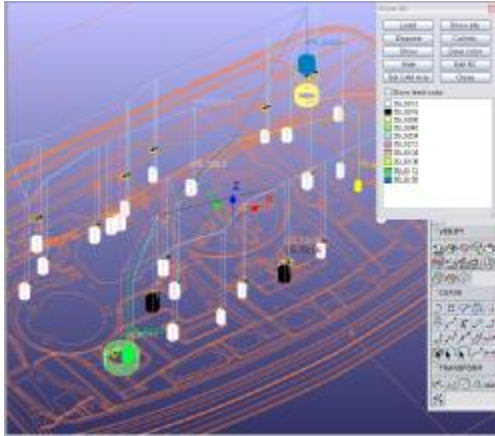
- ◆ User-definable Machining Condition
- ◆ Profile (Non-Circle hole) Machining
- ◆ Rough, Fine NC simultaneous Generation
- ◆ Clean-up NC Generation
- ◆ Starting point definition considering model
- ◆ Helical NC Generation
- ◆ L/R mirror NC Generation
- ◆ Tool Diameter compensation NC Post (G41, G42)



PROCESS FLOW



DIE Hole Machining

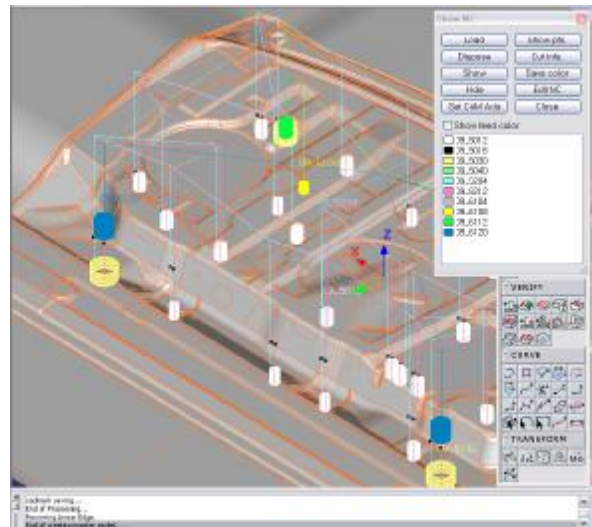


EASY & EXCLUSIVE

- ◆ One Click Operation : Simultaneous NC-Generation
include Bush-hole, Pin-hole, Scrap-hole and arbitrary-shape hole, upper-die & Pad
- ◆ LH, RH Mirror NC Generation.
- ◆ Helical Tool-path : reducing Cutting time & step

& MORE

- ◆ Data Base : bush-hole, Machining condition, tool standardization
- ◆ It is proper to make nc-generation as Standard 3D design without drawless.



VARIOUS SUPPORT

- ◆ Freely definable hole type
- ◆ In case of arbitrary hole type, All NC(include Rough, Fine, Cleanup) which is defined by user are generating at once

